

The Ecology And Control Of Introduced Plants: Promoting Biodiversity And Conservation

Introduced plants, also known as non-native or exotic species, have become a critical issue in the field of ecology, threatening biodiversity and conservation efforts worldwide. These plants are species that have been intentionally or accidentally introduced to an area outside their native range, often disrupting existing ecosystems and causing significant ecological and economic damage.

The Impact of Introduced Plants on Ecological Systems

The of non-native plants can have severe consequences on native flora and fauna. Due to the lack of natural predators and diseases that would normally control their population, introduced species are often able to outcompete native plants, disrupting the delicate balance of ecosystems. Over time, this leads to the loss of biodiversity and the depletion of important resources.

For example, in many areas of North America, the purple loosestrife, an introduced plant from Europe, has become highly invasive, outcompeting native wetland plants. This aggressive species rapidly spreads, forming dense stands that impede water flow, hindering the growth of native plants, and reducing the habitat available for certain wildlife species.

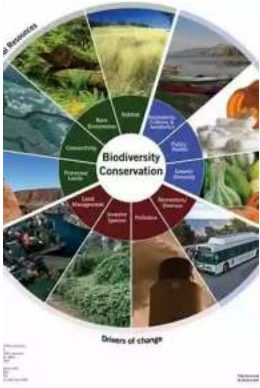
Ecology and Control of Introduced Plants (Ecology, Biodiversity and Conservation)

by Judith H. Myers(1st Edition, Kindle Edition)

★★★★☆ 4.5 out of 5

Language : English

File size : 6224 KB



Screen Reader : Supported
Print length : 328 pages
X-Ray for textbooks : Enabled



The Spread of Introduced Plants

The spread of introduced plants is facilitated by various factors, including globalization, trade, and human activities. As the world becomes more interconnected, species can easily be transported across continents, finding new suitable habitats where they can establish themselves.

Ballast water carried by ships, for example, often contains seeds and spores of non-native species, which can be discharged into new areas, resulting in the and subsequent colonization of these plants. Additionally, the horticultural trade and the deliberate of plants for aesthetic purposes can play a significant role in the spread of exotic species.

Assessing the Ecological Impact

Understanding the ecological impact of introduced plants is crucial for effective management and conservation efforts. Ecologists use various methods to assess the extent of these impacts and develop strategies for controlling or eradicating invasive species.

One approach is studying the competitive interactions between introduced and native species. By comparing growth rates, reproductive success, and resource use, scientists can determine the extent to which introduced plants outcompete native species and understand the ecological processes involved.

The Control and Management of Introduced Plants

Controlling introduced plants can be a challenging task, as these species often have reproductive advantages and adapt quickly to new environments. However, several strategies have been developed to manage their impact and promote biodiversity and conservation.

1. **Biological Control:** This method involves the use of natural enemies, such as insects or pathogens, that specifically target the introduced plant. Careful evaluation is necessary to ensure that the control agent does not negatively impact native species.
2. **Mechanical Control:** This approach involves physically removing or reducing the population of introduced plants. It can include methods like hand-pulling, mowing, or cutting. Mechanical control is often used in combination with other methods.
3. **Chemical Control:** The use of herbicides can effectively control introduced plants. It is important to consider the potential effects on non-target species and the environment when using chemical control methods.
4. **Restoration and Monitoring:** Restoring native habitat and closely monitoring the recovery of native species is integral to long-term conservation efforts. By mitigating the impacts of introduced plants, biodiversity and ecological balance can be preserved.

Managing the ecology and control of introduced plants is critical for promoting biodiversity and conservation. Understanding the impacts of these plants on native ecosystems, along with implementing effective control strategies, is essential to maintaining the delicate balance of our natural world.



Ecology and Control of Introduced Plants (Ecology, Biodiversity and Conservation)

by Judith H. Myers(1st Edition, Kindle Edition)

★★★★☆ 4.5 out of 5

Language : English

File size : 6224 KB

Screen Reader : Supported

Print length : 328 pages

X-Ray for textbooks : Enabled



The global spread of plant species by humans is both a fascinating large scale experiment and, in many cases, a major perturbation to native plant communities. Many of the most destructive weeds today have been intentionally introduced to new environments where they have had unexpected and detrimental impacts. This 2003 book considers the problem of invasive introduced plants from historical, ecological and sociological perspectives. We consider such questions as 'What makes a community invisable?', 'What makes a plant an invader?' and 'Can we restore plant communities after invasion?' Written with advanced students and land managers in mind, this book contains practical explanations, case studies and an to basic techniques for evaluating the impacts of invasive plants. An underlying theme is that experimental and quantitative evaluation of potential problems is necessary, and solutions must consider the evolutionary

and ecological constraints acting on species interactions in newly invaded communities.



Everything You Need To Know About Building Referral Revenue Online

Are you looking for ways to boost revenue for your online business? One effective strategy to consider is building referral revenue. Referral revenue, also known as...



Is It Still Cheating If You Don't Get Caught?

When it comes to morality and ethics, the line between right and wrong can sometimes become blurry. One such situation that often...



The Fascinating History of Afro Uruguay - Unveiling the Untold Stories

Afro Uruguay refers to the rich and diverse history of African descendants in Uruguay. From cultural contributions to political struggles, the Afro Uruguayan community has...



Reflections From Stubborn Son: A Journey of Self-Discovery and Growth

Have you ever encountered a stubborn son who challenged your every attempt to guide and teach him? If you have, then you may find solace and inspiration in this...



Discover the Revolutionary World of Protein Modelling: The Story of Andrew Gamble

Protein modelling is an essential field of study in molecular biology that offers insights into the structure, function, and interactions of proteins. In recent...



The Best Old Fashioned Advice: Timeless Wisdom Passed Down Over Generations

Have you ever turned to your grandparents, parents, or even older friends for advice? There's something magical about the wisdom that comes from their lips – advice that has...



Embark on an Unforgettable Journey: The Sword and Sorcery Fantasy Adventure That Will Leave You Breathless!

Are you ready to be transported to a land of magic, fierce battles, and incredible wonders? Prepare yourself for an unforgettable experience as we dive into the...



The Enchanting World of Wendy Darling Comes Alive in Volume Stars by Colleen Oakes

Step into the magical world of Neverland and get ready to embark on an unforgettable adventure with Wendy Darling, the beloved character from J.M. Barrie's timeless classic,...